

Astro - Physics



**2703 Hampden Ct.
Rockford, Illinois 61107
Phone (815) 226-1471**



DUAL AXIS STAR TRACKER, corrects both right ascension and declination drift. It mounts into the standard 1-1/4" eyepiece holder of a guide scope. (Other size mountings available on request.)

The unique prism beam splitter is a precision crossed knife edge which splits the guide star two ways for automatic tracking in both axes. The guide star can be seen in the 27mm focusing eyepiece while the tracker is in operation. An offset control eliminates the effect of background skylight and allows for variation in guide star brightness. Two built-in LED indicators verify proper operation during an exposure. The newest solid state photodetectors and amplifier circuitry provide high sensitivity for tracking on faint guide stars. The photodetector is a special blue sensitive photocell designed to give maximum response over the full spectrum.

The dual axis tracker requires our dual axis drive corrector to drive the telescope motors. A reversible declination motor is required on the telescope declination axis. For use with a C14, an optional range switch may be added to prevent declination motor overshoot and instability.

Star Tracker Specifications

tracking accuracy equals diameter of the star image (1 to 3 seconds of arc depending on aperture).

spectral response near ultraviolet to far infrared.

sensitivity 2" aperture - 6th mag. 5" aperture - 8th mag. 8" aperture - 9th mag.

power supply internal 9 volt alkaline battery.

size 4-1/2" x 2-1/2" x 3-1/2" **weight** 9 oz.

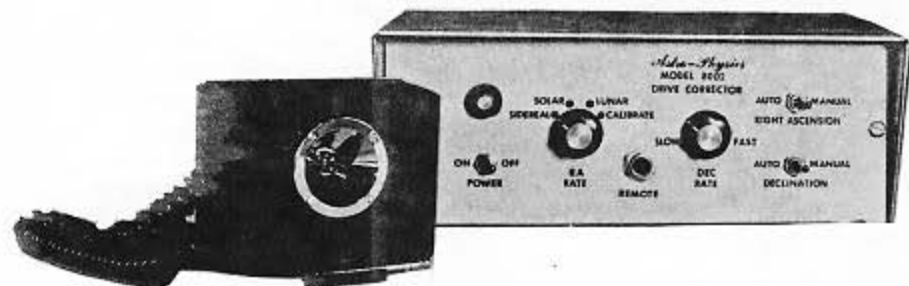
Dual Axis Star Tracker \$ 175.00
C 14 modification \$ 10.00

DUAL AXIS DRIVE CORRECTOR, is the finest, most versatile drive corrector made, featuring automatic right ascension and declination capability.

A modern integrated circuit provides high stability operation from -60° F to 165° F. A separate remote control has 4 push buttons for fast/slow right ascension and declination control. A fine frequency adjustment allows trimming of the R.A. frequency \pm 1Hz. A detachable 3 prong power cord and 8' battery cable are included.

The declination circuit has a 2:1 speed adjustment to suit your guiding needs. It drives a reversible 12 volt D.C. motor or it may be ordered to control a reversible 115 volt A.C. motor, as well. (A.C. option).

The front panel features switch selectable drive rates, including a calibration which uses the pilot light to calibrate the R.A. frequency to the 60 Hz power line. The R.A. output will drive the largest amateur telescope with ease, providing up to 24 watts of power.



JOYSTICK DRIVE CORRECTOR, is our dual axis drive corrector, modified for use with the joystick remote control. This system is a proportional controller, not a 4 switch joystick. The controller features infinite variability of right ascension and declination with spring return to center. The precise center frequency can be adjusted with the trimtab. The joystick returns to the preset rate with no error or drift.

frequency can be adjusted with the trimtab. The joystick returns to the preset rate with no error or drift.

Drive Corrector Specifications

frequency stability .0025% per ° F.

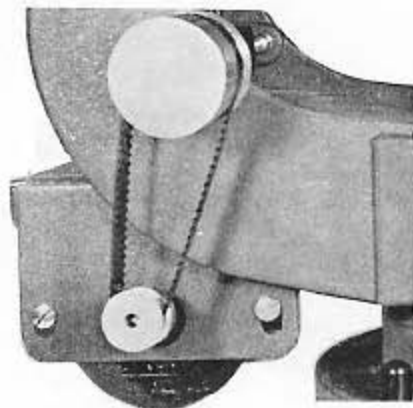
power supply 115v A.C. or 12v D.C. (Foreign orders specify)

a. c. output 115v, 45-75 Hz, 24 watts (Foreign orders specify)

d. c. output 10v, 5 watts

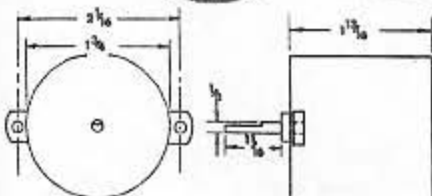
case aluminum enclosure **size** 3.25" x 5" x 8"

Dual Axis Drive Corrector \$ 150.00
Joystick Drive Corrector \$ 190.00
A. C. Option \$ 20.00
C 14 Declination cord \$ 7.50
For frequencies & voltages other than 115v, 60 Hz \$ 10.00



DECLINATION DRIVE, Special bracket mounts under the fork arm without machining. New positive engagement timing belt does not slip or stretch. You get instant reversals without annoying time lag. The knob has a built-in clutch which allows manual adjustment of the declination axis without removing the belt. When placing your order, be sure to specify whether your C8 has the old style fork arms with holes or the new style with ridges.

\$ 58.00



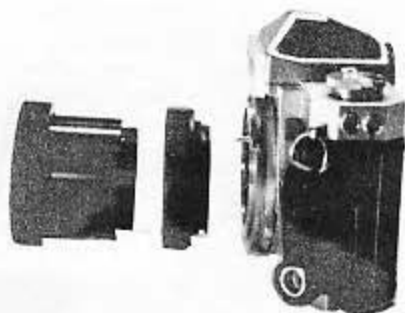
D.C. MOTOR, is for telescopes not equipped with electric declination.

output - 1 RPM @ 12 volts D.C., 65 inch ounces torque.

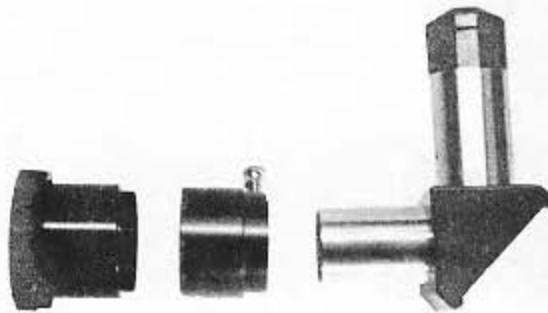
shaft size - 1/8" diameter, 11/16" length

size - 1-3/4" x 1-13/16"

\$ 15.00



f5 PHOTOGRAPHIC SYSTEM



f5 RICHEST FIELD VISUAL SYSTEM

DUAL MOUNT TELECOMPRESSOR reduces exposure time by a factor of four. 100% American made optics are broadband VLR coated and offer excellent resolution to the edges of the field. Telecompressor may be mounted directly to the telescope or to an off-axis guider. Telecompressor has standard "T" thread and may be used with most 35mm cameras with a standard "T" adapter. When ordering the telecompressor, be sure to specify type of telescope; C5, C8, Dynamax 6, Dynamax 8, Quantum 6.

\$ 78.00

Telecompressor Specifications

Coverage - 40mm circle

Coverage with Off-Axis Guider - 38mm circle

Lens Diameter - 45mm

Focal Length - 1000mm, f5 (C8)

750 mm, f3.8 EXTENSION converts 1000mm, f5 to 750mm, f3.8

\$ 22.00

TELECOMPRESSOR EYEPIECE ADAPTER converts your telescope into a Richest Field system using your telecompressor and any standard 1-1/4" eyepiece. The large coverage will fully illuminate the 1-1/4" field. Enjoy spectacular views of deep sky objects.

\$ 22.00

OFF-AXIS EXTENDER lengthens off-axis eyepiece tube so that you can guide at f10 when using the telecompressor to photograph at f5.

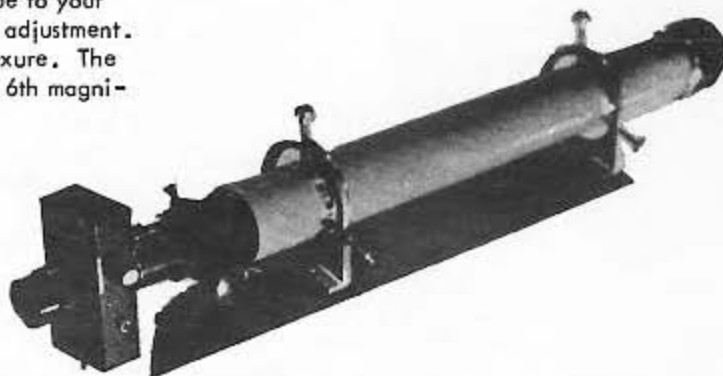
\$ 15.00

2 INCH GUIDE SCOPE resolves 2 seconds of arc showing a perfect Airy disc and no color aberration. The scope comes with our new 6 power barlow, which can be removed for low power work. No drilling or machining is necessary to mount this guide scope to your C8. The mounting rings with thumbscrews allow 5° offset adjustment. This light weight, sturdy system eliminates differential flexure. The guide scope may be used with our star tracker to guide on 6th magnitude stars.

Focal length - 3000mm

Objective clear aperture - 2"

Length - 24" Weight - 2-1/2 pounds



Complete Guide Scope \$180.00
Mounting Rings alone \$ 27.00

SWIVEL CAMERA MOUNT, fits into the Celestron 8 camera mounting holes. No drilling is necessary. Heavy machined aluminum stock construction allows even the heaviest telephoto camera to attach tightly and securely with Allen screws. No more fumbling with hard to tighten thumb screws. This mount allows your telephoto lens to be aimed up to $\pm 30^\circ$ from the direction of the Celestron.

Swivel Mount \$ 55.00



6x Barlow \$ 55.00

6x GUIDING BARLOW A unique high power barlow that extends the focal length of your guide telescope 6 times and more. Guiding at high power enhances the accuracy of your astrophotos. Perfect for the C90 guide scope. Can be used visually for lunar and planetary work.

ASTRO-PHYSICS telescope controls are designed for field use as well as for permanent observatories. Simple wiring facilitates rapid setup. All products are manufactured with the most advanced integrated circuits and electrical components. Circuits are fully operable under temperature extremes of -50°F to $+160^\circ\text{F}$. Fiberglass printed circuits are treated with moisture resistant coating, eliminating drift and erratic operation, even in heavy dewing conditions. All units are fully tested and guaranteed against failure due to materials or workmanship for one year. There is no charge for in warranty repairs and return shipping. Satisfaction is guaranteed. A full refund is allowed on any item returned within 30 days.

ordering information - When ordering by mail, be sure to include your complete street address. Illinois residents must include current state sales tax. Domestic orders will be shipped U.P.S. All shipments are insured for full value. Inspect packages carefully upon receipt and notify the carrier of any damage. Be sure to specify model numbers and options or special modifications when placing your order.

method of payment & shipping charges - A check or money order included with your order is the best method. We pay full shipping charges on pre-paid U.S. orders. Shipping and C.O.D. charges will be added to the amount of C.O.D. purchases. Allow 4 weeks delivery time on orders paid by personal check.

delivery time - Most **ASTRO-PHYSICS** products are kept in stock at all times. Upon receipt of your order, you will be notified of approximate shipping time. Special orders and modified systems require an additional 2 to four weeks.

canadian orders - Payment must be in U.S. dollars, either bank check or money order, pre-paid. Send \$5.00 to cover additional shipping and handling costs. Canadian orders are shipped Parcel Post and insured for full value.

foreign orders - Payment must be in U.S. dollars, by international money order or a check drawn on a U.S. bank. Foreign orders will be shipped Air Parcel Post and insured for full value. Shipping charges are additional. Write for exact charges. Specify your intended order. Be sure to specify voltage and frequency requirements.